

# Talend Project Audit

Project file	C:\Talend local\TALEND_CLOUD\talend.project
Label	TALEND_CLOUD
Description	
Language	java
Author	admin@company.com
ProductVersion	Talend Cloud Data Fabric-8.0.1.20231116_0906-patch

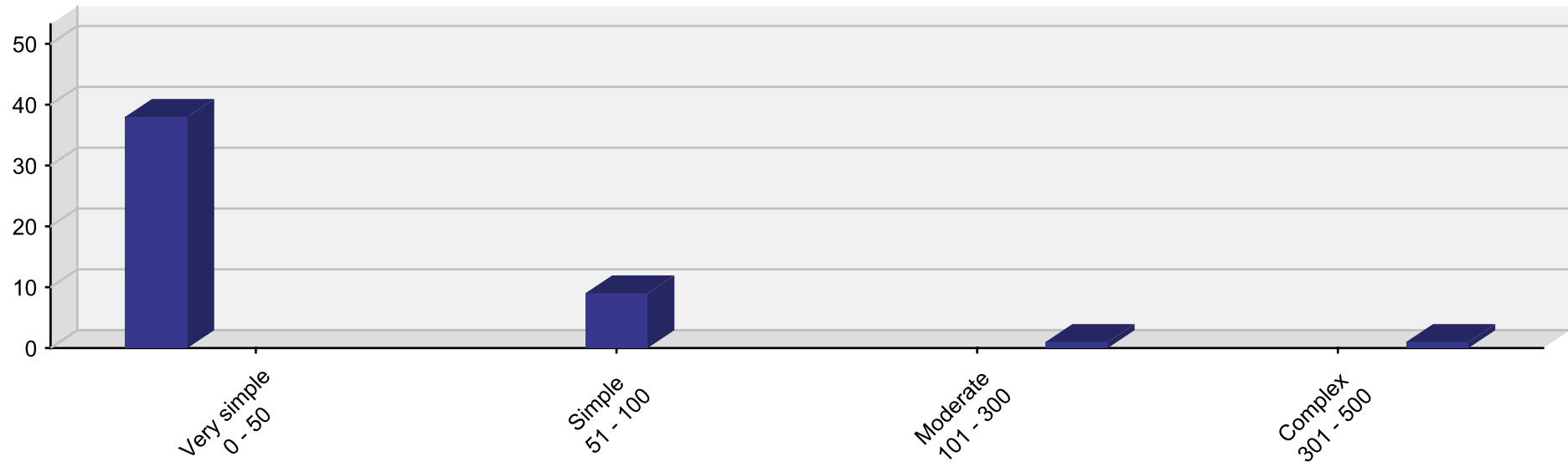
# Talend Project Audit

## Project summary

Indicator	Total for project	Average per job
Job count	50	0,0
Subjob count	0	0,0
Component count	342	6,8
Notes count	31	0,6
Context variable count	44	0,9
Schema count	387	7,7
Schema column count	7250	145,0
Complexity rating	1896	37,9

## Talend Project Audit

### Job Rating - Chart



# Talend Project Audit

## Job rating

Identifier	Author	Creation	Update	Status	Version	Comp	Context	Notes	Rating
<a href="#">A1_ParisStreetIndexCreation</a>	user@talend.com	2011-05-17	2023-03-01		0.1	9	1	1	37,16
<a href="#">A2_normalizeAddress</a>	user@talend.com	2011-05-17	2023-03-01		0.1	8	1		37,76
<a href="#">A2_standardizeAddress</a>	user@talend.com	2011-05-17	2023-03-01		0.1	6	1		16,36
<a href="#">A_createFirstnameSyn</a>	user@talend.com	2011-04-29	2023-03-01		0.1	4	1	1	34,56
<a href="#">A_matchCustomers</a>	user@talend.com	2010-09-13	2023-03-02		0.1	9	2	6	25,52
<a href="#">B_searchFirstname</a>	user@talend.com	2011-04-06	2023-03-01		0.1	4	1	1	11,56
<a href="#">C_group_per_family</a>	user@talend.com	2010-09-13	2023-03-01		0.1	7		1	65,00
<a href="#">C_matchSeveralFieldsSyn</a>	user@talend.com	2011-04-29	2023-03-01		0.1	7	2	2	20,72
<a href="#">Census_Lookup</a>	user@talend.com	2010-05-27	2023-03-01		0.1	5			63,00
<a href="#">Chargement_Snowflake</a>	georges.duminy@decivision.com	2023-07-03	2023-10-17		0.1	4			9,60
<a href="#">DV</a>	georges.duminy@decivision.com	2023-10-27	2023-10-27		0.1	1			2,40
<a href="#">D_group_family_generate_key</a>	user@talend.com	2010-09-14	2023-03-01		0.1	8			71,00
<a href="#">DataQuality_Rules</a>	georges.duminy@decivision.com	2023-07-06	2023-11-08		0.1	5			13,00
<a href="#">DataQuality_Standard</a>	georges.duminy@decivision.com	2023-06-14	2023-11-08		0.1	3			7,20
<a href="#">DataSteward</a>	georges.duminy@decivision.com	2023-03-01	2023-11-21		0.1	4			10,60
<a href="#">Data_prep</a>	georges.duminy@decivision.com	2023-03-01	2023-11-21		0.1	4			10,60
<a href="#">DeDupeWithMatchGroup</a>	user@talend.com	2011-02-04	2023-03-01		0.1	3			7,20
<a href="#">Demo_IATA</a>	user@talend.com	2011-09-19	2023-03-01		0.1	5		1	35,80

# Talend Project Audit

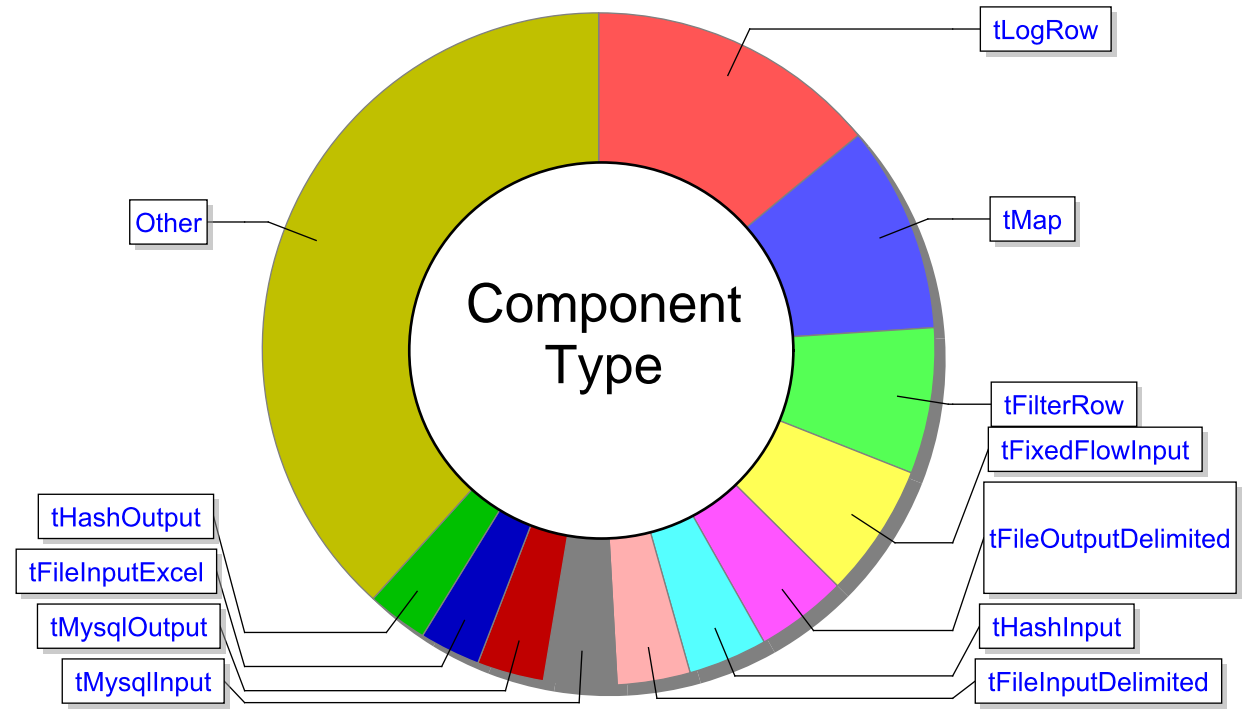
## Job rating

Identifier	Author	Creation	Update	Status	Version	Comp	Context	Notes	Rating
<a href="#">Demo_OFAC_SDN</a>	user@talend.com	2011-09-19	2023-03-01		0.1	6		3	38,20
<a href="#">Demo_standardize_city_names</a>	user@talend.com	2011-09-19	2023-03-01		0.1	7		1	80,40
<a href="#">DeplacerFichier</a>	georges.duminy@decivision.com	2023-08-17	2023-08-22		0.1	2	2		8,72
<a href="#">GetWeather</a>	admin@company.com	2017-04-26	2017-10-23		0.1	9	6		46,96
<a href="#">JD_1_ParseName</a>	user@talend.com	2009-12-29	2023-03-01	DEV	0.1	3		1	7,20
<a href="#">JD_2_StandardizeTitle</a>	user@talend.com	2009-12-29	2023-03-01	DEV	0.1	8	2		82,72
<a href="#">JD_3_ParseAccountDescription</a>	user@talend.com	2009-12-29	2023-03-01	DEV	0.1	18	2		176,72
<a href="#">JD_4_ConsolidateAccounts</a>	user@talend.com	2009-12-29	2023-03-02	DEV	0.1	5	2		15,92
<a href="#">JD_5_Deduplicate_CRM_Customers</a>	user@talend.com	2009-12-29	2023-10-04	DEV	0.1	4	2		13,52
<a href="#">JD_6_ConsolidateCustomers</a>	user@talend.com	2009-12-29	2023-03-01	DEV	0.1	5	2		15,92
<a href="#">JS_RunAll</a>	user@talend.com	2010-02-12	2023-03-01		0.1	6	4	1	22,24
<a href="#">LectureFichier</a>	georges.duminy@decivision.com	2023-07-03	2023-08-22		0.1	87	3	1	481,28
<a href="#">Load_customer_data</a>	user@talend.com	2010-07-30	2023-03-01		0.1	2			4,80
<a href="#">Load_partsmaster_data</a>	user@talend.com	2010-10-25	2023-03-01		0.1	2			4,80
<a href="#">RunAllFirstnameJobs</a>	user@talend.com	2011-10-04	2023-03-01		0.1	3		1	7,20
<a href="#">SayHello</a>	admin@company.com	2017-04-26	2017-10-23		0.1	4	1		22,56
<a href="#">Video_Viewers_Watch_Results_Log_Fil</a>	admin@company.com	2014-09-29	2023-11-21		0.1	14	4	1	66,64
<a href="#">address_standardization</a>	user@talend.com	2011-10-10	2023-03-01		0.1	12		1	61,00

# Talend Project Audit

## Job rating

Identifier	Author	Creation	Update	Status	Version	Comp	Context	Notes	Rating
<a href="#">c0_create_duplicates</a>	user@talend.com	2011-01-28	2023-03-01		0.1	6	1	1	69,56
<a href="#">c1_merge_exact_duplicates</a>	user@talend.com	2011-01-28	2023-03-01		0.1	4	4	1	17,44
<a href="#">cif_customer_parsing</a>	user@talend.com	2010-12-15	2023-03-02		0.1	6			14,40
<a href="#">correct_claim_dates</a>	user@talend.com	2011-03-11	2023-03-01		0.1	2			4,80
<a href="#">demo_</a>	georges.duminy@decivision.com	2023-10-04	2023-10-06		0.1	4			88,60
<a href="#">extract_invalid_values</a>	user@talend.com	2010-12-15	2023-03-01		0.1	3			7,20
<a href="#">jCloudLog</a>	admin@company.com	2015-03-31	2017-10-09		0.1	4			9,60
<a href="#">main</a>	georges.duminy@decivision.com	2023-08-16	2023-08-22		0.1	1			2,40
<a href="#">phone_number</a>	user@talend.com	2011-03-09	2023-03-02		0.1	3		1	7,20
<a href="#">products_parsing</a>	user@talend.com	2011-03-23	2023-10-04		0.1	7		2	17,80
<a href="#">tGoogleAddressRow</a>	user@talend.com	2011-07-13	2023-10-04		0.1	3		1	7,20
<a href="#">tGoogleGeocoder</a>	user@talend.com	2011-08-04	2023-03-01		0.1	3		1	7,20
<a href="#">tGoogleMapLookup</a>	user@talend.com	2011-08-04	2023-03-01		0.1	3		1	7,20
<a href="#">test</a>	georges.duminy@decivision.com	2023-11-06	2023-11-06		0.1	0			0,00
<b>Total</b>						<b>342</b>	<b>44</b>	<b>31</b>	<b>1896,44</b>



# Talend Project Audit

## Component usage

Component type	Count	Percentage
tLogRow	48	14,04
tMap	34	9,94
tFilterRow	24	7,02
tFixedFlowInput	22	6,43
tFileOutputDelimited	15	4,39
tHashInput	13	3,80
tFileInputDelimited	12	3,51
tMysqlInput	12	3,51
tMysqlOutput	11	3,22
tFileInputExcel	10	2,92
tHashOutput	10	2,92
tJavaRow	9	2,63
tRunJob	9	2,63
tFileOutputExcel	7	2,05
tFilterColumns	7	2,05
tExtractXMLField	6	1,75
tFlowToIterate	6	1,75
tSynonymSearch	6	1,75



# Talend Project Audit

## Component usage

Component type	Count	Percentage
tJobLog	5	1,46
tMatchGroup	5	1,46
tExtractRegexFields	4	1,17
tSortRow	4	1,17
tStandardizeRow	4	1,17
tRowGenerator	3	0,88
tSynonymOutput	3	0,88
jCloudLog	2	0,58
tDataDecrypt	2	0,58
tExtractDelimitedFields	2	0,58
tFileInputFullRow	2	0,58
tFileList	2	0,58
tFuzzyJoin	2	0,58
tGoogleAddressRow	2	0,58
tJavaFlex	2	0,58
tJobFailure	2	0,58
tMSSqlInput	2	0,58
tMemorizeRows	2	0,58

# Talend Project Audit

## Component usage

Component type	Count	Percentage
tMysqlConnection	2	0,58
tRESTClient	2	0,58
tSnowflakeOutput	2	0,58
tDataQualityRules	1	0,29
tDataStewardshipTaskInput	1	0,29
tDataStewardshipTaskOutput	1	0,29
tDataprepRun	1	0,29
tDatasetInput	1	0,29
tDropboxConnection	1	0,29
tDropboxGet	1	0,29
tDropboxPut	1	0,29
tFileCopy	1	0,29
tFuzzyMatch	1	0,29
tFuzzyUniqRow	1	0,29
tGenKey	1	0,29
tGoogleGeocoder	1	0,29
tGoogleMapLookup	1	0,29
tInformixConnection	1	0,29

# Talend Project Audit

## Component usage

Component type	Count	Percentage
tJava	1	0,29
tLogCatcher	1	0,29
tMySQLInvalidRows	1	0,29
tMysqlCommit	1	0,29
tMysqlRollback	1	0,29
tNormalize	1	0,29
tRecordMatching	1	0,29
tStandardizePhoneNumber	1	0,29
tSurviveFields	1	0,29
tUnite	1	0,29
<b>Total</b>	<b>342</b>	<b>100</b>

# Talend Project Audit

*Job using jCloudLog*

Job	Count
GetWeather	1
SayHello	1
<b>Total for jCloudLog</b>	<b>2</b>

# Talend Project Audit

*Job using tDataDecrypt*

Job	Count
Video_Viewers_Watch_Results_Log_Filter	2
<b>Total for tDataDecrypt</b>	<b>2</b>

# Talend Project Audit

*Job using tDataQualityRules*

Job	Count
DataQuality_Standdard	1
<b>Total for tDataQualityRules</b>	<b>1</b>

# Talend Project Audit

*Job using tDataStewardshipTaskInput*

Job	Count
DataQuality_Rules	1
<b>Total for tDataStewardshipTaskInput</b>	<b>1</b>

# Talend Project Audit

*Job using tDataStewardshipTaskOutput*

Job	Count
DataSteward	1
<b>Total for tDataStewardshipTaskOutput</b>	<b>1</b>



# Talend Project Audit

*Job using tDataprepRun*

Job	Count
Data_prep	1
Total for tDataprepRun	1

# Talend Project Audit

*Job using tDatasetInput*

Job	Count
Video_Viewers_Watch_Results_Log_Filter	1
<b>Total for tDatasetInput</b>	<b>1</b>

# Talend Project Audit

*Job using tDropboxConnection*

Job	Count
Video_Viewers_Watch_Results_Log_Filter	1
<b>Total for tDropboxConnection</b>	<b>1</b>

# Talend Project Audit

*Job using tDropboxGet*

Job	Count
Video_Viewers_Watch_Results_Log_Filter	1
<b>Total for tDropboxGet</b>	<b>1</b>

# Talend Project Audit

*Job using tDropboxPut*

Job	Count
Video_Viewers_Watch_Results_Log_Filter	1
<b>Total for tDropboxPut</b>	<b>1</b>

# Talend Project Audit

*Job using tExtractDelimitedFields*

Job	Count
JD_1_ParseName	1
cif_customer_parsing	1
<b>Total for tExtractDelimitedFields</b>	<b>2</b>

# Talend Project Audit

*Job using tExtractRegexFields*

Job	Count
JD_3_ParseAccountDescription	4
<b>Total for tExtractRegexFields</b>	<b>4</b>

## Talend Project Audit

*Job using tExtractXMLField*

Job	Count
A2_normalizeAddress	2
A1_ParisStreetIndexCreation	1
A2_standardizeAddress	1
GetWeather	1
products_parsing	1
<b>Total for tExtractXMLField</b>	<b>6</b>



# Talend Project Audit

*Job using tFileCopy*

Job	Count
DeplacerFichier	1
<b>Total for tFileCopy</b>	<b>1</b>

## Talend Project Audit

### *Job using tFileInputDelimited*

Job	Count
LectureFichier	4
JD_2_StandardizeTitle	2
JD_3_ParseAccountDescription	2
Census_Lookup	1
DeDupeWithMatchGroup	1
Video_Viewers_Watch_Results_Log_Filter	1
correct_claim_dates	1
<b>Total for tFileInputDelimited</b>	<b>12</b>

# Talend Project Audit

*Job using tFileInputExcel*

Job	Count
demo_	2
Census_Lookup	1
DataQuality_Rules	1
DataQuality_Stantdard	1
DataSteward	1
Data_prep	1
Load_customer_data	1
Load_partsmaster_data	1
c1_merge_exact_duplicates	1
<b>Total for tFileInputExcel</b>	<b>10</b>

# Talend Project Audit

*Job using tFileInputFullRow*

Job	Count
LectureFichier	2
<b>Total for tFileInputFullRow</b>	<b>2</b>

# Talend Project Audit

*Job using tFileList*

Job	Count
DeplacerFichier	1
LectureFichier	1
<b>Total for tFileList</b>	<b>2</b>

# Talend Project Audit

## *Job using tFileOutputDelimited*

Job	Count
Census_Lookup	2
JD_4_ConsolidateAccounts	2
JD_5_Deduplicate_CRM_Customers	2
JD_6_ConsolidateCustomers	2
LectureFichier	2
Video_Viewers_Watch_Results_Log_Filter	2
address_standardization	2
DeDupeWithMatchGroup	1
<b>Total for tFileOutputDelimited</b>	<b>15</b>

# Talend Project Audit

*Job using tFileOutputExcel*

Job	Count
DataQuality_Rules	2
DataQuality_Standard	1
Data_prep	1
c0_create_duplicates	1
c1_merge_exact_duplicates	1
demo_	1
<b>Total for tFileOutputExcel</b>	<b>7</b>

# Talend Project Audit

## *Job using tFilterColumns*

Job	Count
A_matchCustomers	3
address_standardization	2
A2_standardizeAddress	1
Demo_OFAC_SDN	1
<b>Total for tFilterColumns</b>	<b>7</b>



## Talend Project Audit

### *Job using tFilterRow*

Job	Count
LectureFichier	14
address_standardization	2
A1_ParisStreetIndexCreation	1
DataQuality_Rules	1
DataSteward	1
Data_prep	1
GetWeather	1
JD_2_StandardizeTitle	1
Video_Viewers_Watch_Results_Log_Filter	1
products_parsing	1
<b>Total for tFilterRow</b>	<b>24</b>

# Talend Project Audit

*Job using tFixedFlowInput*

Job	Count
A_matchCustomers	2
C_matchSeveralFieldsSyn	2
c0_create_duplicates	2
A1_ParisStreetIndexCreation	1
A2_normalizeAddress	1
A2_standardizeAddress	1
A_createFirstnameSyn	1
B_searchFirstname	1
C_group_per_family	1
D_group_family_generate_key	1
Demo_IATA	1
Demo_OFAC_SDN	1
Demo_standardize_city_names	1
GetWeather	1
LectureFichier	1
SayHello	1
address_standardization	1
phone_number	1

# Talend Project Audit

*Job using tFixedFlowInput*

Job	Count
products_parsing	1
<b>Total for tFixedFlowInput</b>	<b>22</b>

# Talend Project Audit

*Job using tFlowTolterate*

Job	Count
LectureFichier	5
Video_Viewers_Watch_Results_Log_Filter	1
<b>Total for tFlowTolterate</b>	<b>6</b>

# Talend Project Audit

*Job using tFuzzyJoin*

Job	Count
JD_4_ConsolidateAccounts	1
JD_6_ConsolidateCustomers	1
<b>Total for tFuzzyJoin</b>	<b>2</b>

# Talend Project Audit

*Job using tFuzzyMatch*

Job	Count
JD_2_StandardizeTitle	1
<b>Total for tFuzzyMatch</b>	<b>1</b>

# Talend Project Audit

*Job using tFuzzyUniqRow*

Job	Count
JD_5_Deduplicate_CRM_Customers	1
<b>Total for tFuzzyUniqRow</b>	<b>1</b>

# Talend Project Audit

*Job using tGenKey*

Job	Count
D_group_family_generate_key	1
<b>Total for tGenKey</b>	<b>1</b>



# Talend Project Audit

*Job using tGoogleAddressRow*

Job	Count
address_standardization	1
tGoogleAddressRow	1
<b>Total for tGoogleAddressRow</b>	<b>2</b>

# Talend Project Audit

*Job using tGoogleGeocoder*

Job	Count
tGoogleGeocoder	1
<b>Total for tGoogleGeocoder</b>	<b>1</b>

# Talend Project Audit

*Job using tGoogleMapLookup*

Job	Count
tGoogleMapLookup	1
<b>Total for tGoogleMapLookup</b>	<b>1</b>

# Talend Project Audit

*Job using tHashInput*

Job	Count
LectureFichier	13
<b>Total for tHashInput</b>	<b>13</b>

# Talend Project Audit

*Job using tHashOutput*

Job	Count
LectureFichier	10
<b>Total for tHashOutput</b>	<b>10</b>

# Talend Project Audit

*Job using tInformixConnection*

Job	Count
main	1
<b>Total for tInformixConnection</b>	<b>1</b>

# Talend Project Audit

*Job using tJava*

Job	Count
LectureFichier	1
<b>Total for tJava</b>	<b>1</b>

# Talend Project Audit

*Job using tJavaFlex*

Job	Count
Video_Viewers_Watch_Results_Log_Filter	2
<b>Total for tJavaFlex</b>	<b>2</b>



# Talend Project Audit

*Job using tJavaRow*

Job	Count
LectureFichier	9
<b>Total for tJavaRow</b>	<b>9</b>

# Talend Project Audit

*Job using tJobFailure*

Job	Count
GetWeather	1
jCloudLog	1
<b>Total for tJobFailure</b>	<b>2</b>

# Talend Project Audit

*Job using tJobLog*

Job	Count
GetWeather	2
jCloudLog	2
SayHello	1
<b>Total for tJobLog</b>	<b>5</b>

# Talend Project Audit

*Job using tLogCatcher*

Job	Count
jCloudLog	1
<b>Total for tLogCatcher</b>	<b>1</b>

# Talend Project Audit

*Job using tLogRow*

Job	Count
LectureFichier	8
A1_ParisStreetIndexCreation	3
A2_normalizeAddress	3
A_matchCustomers	3
C_group_per_family	3
C_matchSeveralFieldsSyn	3
D_group_family_generate_key	3
Demo_standardize_city_names	3
products_parsing	3
A2_standardizeAddress	2
B_searchFirstname	2
Demo_IATA	2
Demo_OFAC_SDN	2
A_createFirstnameSyn	1
DataSteward	1
address_standardization	1
extract_invalid_values	1
phone_number	1

# Talend Project Audit

*Job using tLogRow*

Job	Count
tGoogleAddressRow	1
tGoogleGeocoder	1
tGoogleMapLookup	1
<b>Total for tLogRow</b>	<b>48</b>

# Talend Project Audit

*Job using tMSSqlInput*

Job	Count
Chargement_Snowflake	2
<b>Total for tMSSqlInput</b>	<b>2</b>

# Talend Project Audit

## Job using tMap

Job	Count
LectureFichier	12
JD_3_ParseAccountDescription	4
Demo_standardize_city_names	2
c0_create_duplicates	2
A1_ParisStreetIndexCreation	1
A2_normalizeAddress	1
A_createFirstnameSyn	1
C_group_per_family	1
Census_Lookup	1
D_group_family_generate_key	1
Demo_IATA	1
Demo_OFAC_SDN	1
GetWeather	1
JD_2_StandardizeTitle	1
SayHello	1
Video_Viewers_Watch_Results_Log_Filter	1
address_standardization	1
demo_	1



# Talend Project Audit

*Job using tMap*

Job	Count
Total for tMap	34

# Talend Project Audit

## *Job using tMatchGroup*

Job	Count
C_group_per_family	1
D_group_family_generate_key	1
DeDupeWithMatchGroup	1
address_standardization	1
c1_merge_exact_duplicates	1
<b>Total for tMatchGroup</b>	<b>5</b>

# Talend Project Audit

*Job using tMemorizeRows*

Job	Count
LectureFichier	2
<b>Total for tMemorizeRows</b>	<b>2</b>

# Talend Project Audit

*Job using tMySQLInvalidRows*

Job	Count
extract_invalid_values	1
<b>Total for tMySQLInvalidRows</b>	<b>1</b>

# Talend Project Audit

*Job using tMysqlCommit*

Job	Count
cif_customer_parsing	1
<b>Total for tMysqlCommit</b>	<b>1</b>

# Talend Project Audit

*Job using tMysqlConnection*

Job	Count
cif_customer_parsing	1
extract_invalid_values	1
<b>Total for tMysqlConnection</b>	<b>2</b>

# Talend Project Audit

*Job using tMysqlInput*

Job	Count
JD_3_ParseAccountDescription	4
JD_4_ConsolidateAccounts	2
JD_6_ConsolidateCustomers	2
JD_1_ParseName	1
JD_2_StandardizeTitle	1
JD_5_Deduplicate_CRM_Customers	1
cif_customer_parsing	1
<b>Total for tMysqlInput</b>	<b>12</b>

## Talend Project Audit

### *Job using tMysqlOutput*

Job	Count
JD_3_ParseAccountDescription	4
JD_2_StandardizeTitle	2
JD_1_ParseName	1
Load_customer_data	1
Load_partsmaster_data	1
cif_customer_parsing	1
correct_claim_dates	1
<b>Total for tMysqlOutput</b>	<b>11</b>



# Talend Project Audit

*Job using tMysqlRollback*

Job	Count
cif_customer_parsing	1
<b>Total for tMysqlRollback</b>	<b>1</b>

# Talend Project Audit

*Job using tNormalize*

Job	Count
LectureFichier	1
<b>Total for tNormalize</b>	<b>1</b>

# Talend Project Audit

## *Job using tRESTClient*

Job	Count
DV	1
GetWeather	1
<b>Total for tRESTClient</b>	<b>2</b>

# Talend Project Audit

*Job using tRecordMatching*

Job	Count
A_matchCustomers	1
<b>Total for tRecordMatching</b>	<b>1</b>

# Talend Project Audit

*Job using tRowGenerator*

Job	Count
tGoogleAddressRow	1
tGoogleGeocoder	1
tGoogleMapLookup	1
<b>Total for tRowGenerator</b>	<b>3</b>

# Talend Project Audit

*Job using tRunJob*

Job	Count
JS_RunAll	6
RunAllFirstnameJobs	3
<b>Total for tRunJob</b>	<b>9</b>

# Talend Project Audit

*Job using tSnowflakeOutput*

Job	Count
Chargement_Snowflake	2
<b>Total for tSnowflakeOutput</b>	<b>2</b>

# Talend Project Audit

*Job using tSortRow*

Job	Count
LectureFichier	2
C_group_per_family	1
D_group_family_generate_key	1
<b>Total for tSortRow</b>	<b>4</b>



# Talend Project Audit

*Job using tStandardizePhoneNumber*

Job	Count
phone_number	1
<b>Total for tStandardizePhoneNumber</b>	<b>1</b>

# Talend Project Audit

*Job using tStandardizeRow*

Job	Count
A1_ParisStreetIndexCreation	1
A2_normalizeAddress	1
A2_standardizeAddress	1
products_parsing	1
<b>Total for tStandardizeRow</b>	<b>4</b>

# Talend Project Audit

*Job using tSurviveFields*

Job	Count
c1_merge_exact_duplicates	1
<b>Total for tSurviveFields</b>	<b>1</b>

## Talend Project Audit

*Job using tSynonymOutput*

Job	Count
A1_ParisStreetIndexCreation	1
A_createFirstnameSyn	1
C_matchSeveralFieldsSyn	1
<b>Total for tSynonymOutput</b>	<b>3</b>

# Talend Project Audit

*Job using tSynonymSearch*

Job	Count
B_searchFirstname	1
C_matchSeveralFieldsSyn	1
Demo_IATA	1
Demo_OFAC_SDN	1
Demo_standardize_city_names	1
address_standardization	1
<b>Total for tSynonymSearch</b>	<b>6</b>

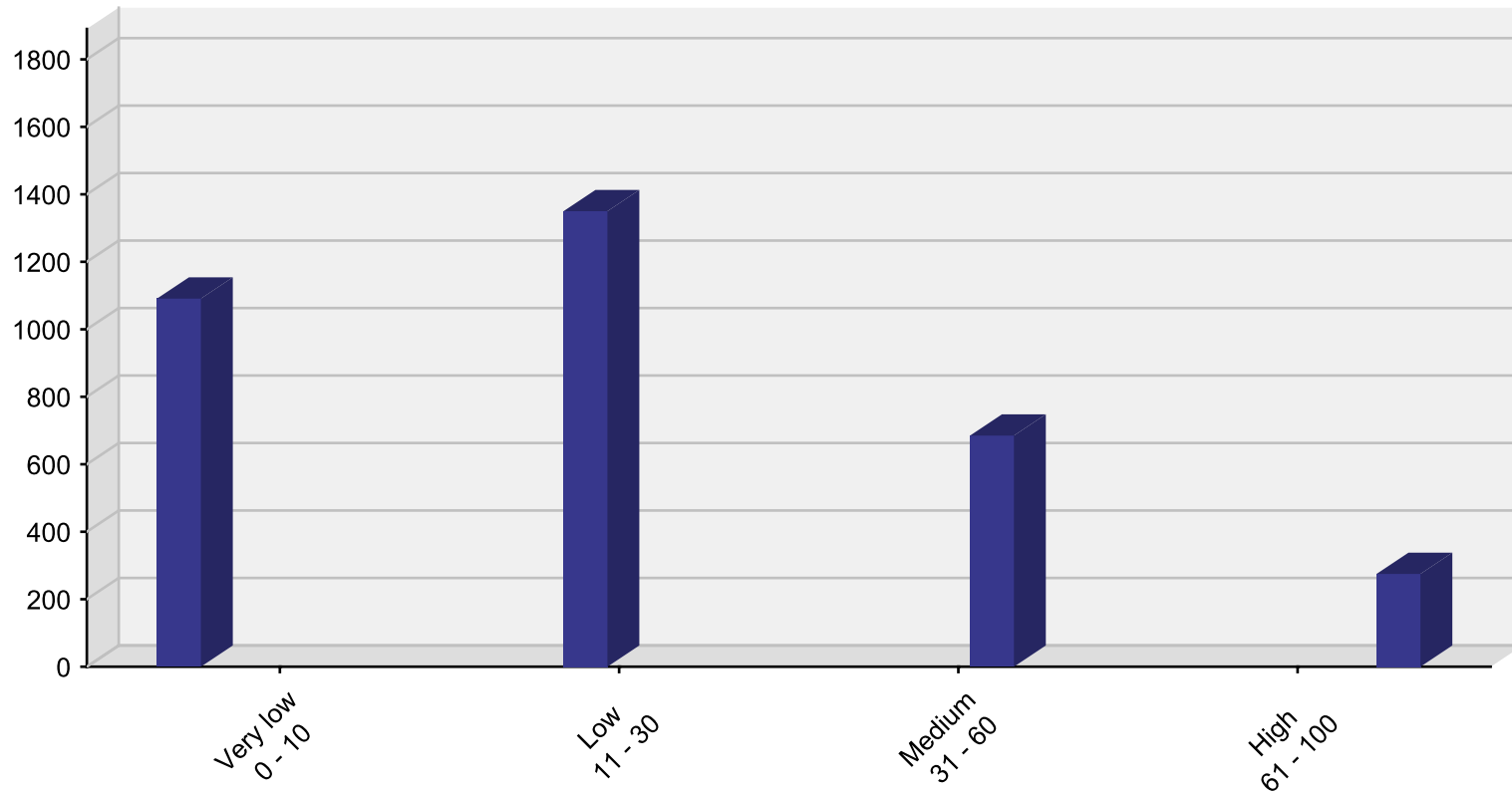
# Talend Project Audit

*Job using tUnite*

Job	Count
c0_create_duplicates	1
<b>Total for tUnite</b>	<b>1</b>

## Talend Project Audit

### Schema Columns - Chart



# Talend Project Audit

## Trigger usage in Project

Trigger type	Trigger count	Percentage
COMPONENT_OK	3	2,88
DUPLICATE	1	0,96
FAULT	1	0,96
FILTER	22	21,15
FLOW_OUTPUT	5	4,81
ITERATE	9	8,65
MATCHES	1	0,96
NON_MATCHES	1	0,96
POSSIBLE_MATCHES	1	0,96
REJECT	31	29,81
RESPONSE	1	0,96
SUBJOB_ERROR	1	0,96
SUBJOB_OK	26	25,00
UNIQUE	1	0,96
<b>Total</b>	<b>104</b>	<b>100</b>



# Talend Project Audit

## Trigger usage in Jobs

Trigger type	Trigger count	Percentage
UNIQUE	1	1,39
SUBJOB_OK	8	11,11
SUBJOB_ERROR	1	1,39
RESPONSE	1	1,39
REJECT	16	22,22
POSSIBLE_MATCHES	1	1,39
NON_MATCHES	1	1,39
MATCHES	1	1,39
ITERATE	4	5,56
FLOW_OUTPUT	5	6,94
FILTER	8	11,11
FAULT	22	30,56
DUPLICATE	1	1,39
COMPONENT_OK	2	2,78
<b>Total</b>	<b>72</b>	<b>100</b>

# Talend Project Audit

## Documentation item type

Document type	Document count	Percentage
Repository	48	50,00
	48	50,00
<b>Total</b>	<b>96</b>	<b>100</b>

# Talend Project Audit

## Documentation folder level

Document folder level	Document count	Percentage
0	10	10,42
1	16	16,67
2	56	58,33
3	14	14,58
<b>Total</b>	<b>96</b>	<b>100</b>

# Talend Project Audit

## Documentation item status

Document status	Document count	Percentage
	96	100,00
<b>Total</b>	<b>96</b>	<b>100</b>

# Talend Project Audit

## Documentation item version

Document version	Document count	Percentage
0.1	96	100,00
<b>Total</b>	<b>96</b>	<b>100</b>

# Talend Project Audit

## Job folder usage

Folder level	Job count	Percentage
2	28	57,14
1	8	16,33
3	7	14,29
0	6	12,24
<b>Total</b>	<b>49</b>	<b>100</b>

# Talend Project Audit

## Job versioning usage

Job version	Job count	Percentage
0.1	50	100,00
<b>Total</b>	<b>50</b>	<b>100</b>

# Talend Project Audit

## Repository metadata

Metadata type	Count	Percentage
Connexions de bases de données	8	44,44
Fichier Excel	6	33,33
Fichier délimité	3	16,67
Snowflake	1	5,56
Azure Storage	0	0,00
Cluster Hadoop	0	0,00
Connexions NoSQL	0	0,00
Data Stewardship	0	0,00
FTP	0	0,00
Fichier LDIF	0	0,00
Fichier XML	0	0,00
Fichier positionnel	0	0,00
Fichier regex	0	0,00
File Json	0	0,00
Gestion des règles	0	0,00
Google Drive	0	0,00
Hierarchical Mapper	0	0,00
LDAP	0	0,00



# Talend Project Audit

## Repository metadata

Metadata type	Count	Percentage
REST API Definitions	0	0,00
Règles de validation	0	0,00
SAP Connections	0	0,00
Salesforce	0	0,00
Schémas génériques	0	0,00
Service Web	0	0,00
TaCoKit	0	0,00
Talend MDM	0	0,00
UN/EDIFACT	0	0,00
<b>Total</b>	<b>18</b>	<b>100</b>

# Talend Project Audit

## Property Metadata

Metadata type	Count	Percentage
Repository Property	21	100,00
<b>Total</b>	<b>21</b>	<b>100</b>

# Talend Project Audit

## Schema Metadata

Metadata type	Count	Percentage
Repository Property	21	100,00
<b>Total</b>	<b>21</b>	<b>100</b>

## Talend Project Audit

Misplaced components : No data

# Talend Project Audit

## A1\_ParisStreetIndexCreation

Indicator	Value
Author	user@talend.com
Create	2011-05-17 17:28:52
Lasted modified	2023-03-01 18:49:03
Status	
This job creates the index with Paris's street from data	
Job rating	37,16
Component count	9,00
- tLogRow	3
- tExtractXMLField	1
- tFilterRow	1
- tFixedFlowInput	1
- tMap	1
- tStandardizeRow	1
- tSynonymOutput	1
Schema column count	48,00
- tFilterRow	10
- tLogRow	10

# Talend Project Audit

## A1\_ParisStreetIndexCreation

Indicator	Value
- tExtractXMLField	9
- tSynonymOutput	8
- tMap	5
- tStandardizeRow	5
- tFixedFlowInput	1
Context variable count	1,00
Job notes count	1,00
Trigger count	4,00

# Talend Project Audit

## A2\_normalizeAddress

Indicator	Value
Author	user@talend.com
Create	2011-05-17 19:05:46
Lasted modified	2023-03-01 18:49:03
Status	
parses some fields, extracts the address information and normalizes the addresses	
Job rating	37,76
Component count	8,00
- tLogRow	3
- tExtractXMLField	2
- tFixedFlowInput	1
- tMap	1
- tStandardizeRow	1
Schema column count	41,00
- tExtractXMLField	16
- tLogRow	12
- tStandardizeRow	7
- tMap	5

# Talend Project Audit

## A2\_normalizeAddress

Indicator	Value
- tFixedFlowInput	1
Context variable count	1,00
Job notes count	0,00
Trigger count	1,00



# Talend Project Audit

## A2\_standardizeAddress

Indicator	Value
Author	user@talend.com
Create	2011-05-17 19:05:46
Lasted modified	2023-03-01 18:49:03
Status	
parses some fields, extracts the address information and normalizes the addresses	
Job rating	16,36
Component count	6,00
- tLogRow	2
- tExtractXMLField	1
- tFilterColumns	1
- tFixedFlowInput	1
- tStandardizeRow	1
Schema column count	25,00
- tExtractXMLField	8
- tLogRow	8
- tStandardizeRow	7
- tFilterColumns	1

# Talend Project Audit

## A2\_standardizeAddress

Indicator	Value
- tFixedFlowInput	1
Context variable count	1,00
Job notes count	0,00
Trigger count	1,00

# Talend Project Audit

## A\_createFirstnameSyn

Indicator	Value
Author	user@talend.com
Create	2011-04-29 15:54:23
Lasted modified	2023-03-01 20:37:49
Status	
Job rating	34,56
Component count	4,00
- tFixedFlowInput	1
- tLogRow	1
- tMap	1
- tSynonymOutput	1
Schema column count	33,00
- tMap	12
- tFixedFlowInput	10
- tSynonymOutput	8
- tLogRow	3
Context variable count	1,00

# Talend Project Audit

## A\_createFirstnameSyn

Indicator	Value
Job notes count	1,00
Trigger count	1,00

# Talend Project Audit

## A\_matchCustomers

Indicator	Value
Author	user@talend.com
Create	2010-09-13 17:41:26
Lasted modified	2023-03-02 08:15:27
Status	
This jobs uses the tRecordMatching component in order to split incoming data into three sets of data: matches, non-matches, possible matches.	
Job rating	25,52
Component count	9,00
- tFilterColumns	3
- tLogRow	3
- tFixedFlowInput	2
- tRecordMatching	1
Schema column count	128,00
- tRecordMatching	64
- tFilterColumns	25
- tLogRow	25
- tFixedFlowInput	14
Context variable count	2,00

# Talend Project Audit

## A\_matchCustomers

Indicator	Value
Job notes count	6,00
Trigger count	3,00

# Talend Project Audit

## B\_searchFirstname

Indicator	Value
Author	user@talend.com
Create	2011-04-06 16:05:46
Lasted modified	2023-03-01 18:49:03
Status	
will match on firstnames and nicknames	
Job rating	11,56
Component count	4,00
- tLogRow	2
- tFixedFlowInput	1
- tSynonymSearch	1
Schema column count	31,00
- tLogRow	15
- tSynonymSearch	15
- tFixedFlowInput	1
Context variable count	1,00
Job notes count	1,00
Trigger count	1,00

# Talend Project Audit



**B\_searchFirstname**

Indicator

Value



# Talend Project Audit

## C\_group\_per\_family

Indicator	Value
Author	user@talend.com
Create	2010-09-13 17:00:12
Lasted modified	2023-03-01 18:48:53
Status	
Groups people according to the similarity of their family name	
Job rating	65,00
Component count	7,00
- tLogRow	3
- tFixedFlowInput	1
- tMap	1
- tMatchGroup	1
- tSortRow	1
Schema column count	146,00
- tMatchGroup	65
- tMap	33
- tLogRow	28
- tSortRow	12

# Talend Project Audit

## C\_group\_per\_family

Indicator	Value
- tFixedFlowInput	8
Context variable count	0,00
Job notes count	1,00
Trigger count	1,00

# Talend Project Audit

## C\_matchSeveralFieldsSyn

Indicator	Value
Author	user@talend.com
Create	2011-04-29 15:54:23
Lasted modified	2023-03-01 18:49:03
Status	
Job rating	20,72
Component count	7,00
- tLogRow	3
- tFixedFlowInput	2
- tSynonymOutput	1
- tSynonymSearch	1
Schema column count	48,00
- tLogRow	21
- tSynonymSearch	19
- tSynonymOutput	5
- tFixedFlowInput	3
Context variable count	2,00

# Talend Project Audit

## C\_matchSeveralFieldsSyn

Indicator	Value
Job notes count	2,00
Trigger count	3,00

# Talend Project Audit

## Census\_Lookup

Indicator	Value
Author	user@talend.com
Create	2010-05-27 23:03:48
Lasted modified	2023-03-01 18:49:05
Status	
Job rating	63,00
Component count	5,00
- tFileOutputDelimited	2
- tFileInputDelimited	1
- tFileInputExcel	1
- tMap	1
Schema column count	83,00
- tMap	32
- tFileInputExcel	18
- tFileOutputDelimited	17
- tFileInputDelimited	16
Context variable count	0,00

# Talend Project Audit

## Census\_Lookup

Indicator	Value
Job notes count	0,00
Trigger count	0,00
Metadata count	4,00

# Talend Project Audit

## Chargement\_Snowflake

Indicator	Value
Author	georges.duminy@decivision.com
Create	2023-07-03 19:32:19
Lasted modified	2023-10-17 12:04:05
Status	
Job rating	9,60
Component count	4,00
- tMSSqlInput	2
- tSnowflakeOutput	2
Schema column count	38,00
- tSnowflakeOutput	29
- tMSSqlInput	9
Context variable count	0,00
Job notes count	0,00
Trigger count	0,00
Metadata count	6,00

# Talend Project Audit

## DV

Indicator	Value
Author	georges.duminy@decivision.com
Create	2023-10-27 16:06:26
Lasted modified	2023-10-27 18:01:51
Status	
Job rating	2,40
Component count	1,00
- tRESTClient	1
Schema column count	7,00
- tRESTClient	7
Context variable count	0,00
Job notes count	0,00
Trigger count	0,00



# Talend Project Audit

## D\_group\_family\_generate\_key

Indicator	Value
Author	user@talend.com
Create	2010-09-14 14:42:59
Lasted modified	2023-03-01 18:48:53
Status	
use tGenKey to generate a blocking key	
Job rating	71,00
Component count	8,00
- tLogRow	3
- tFixedFlowInput	1
- tGenKey	1
- tMap	1
- tMatchGroup	1
- tSortRow	1
Schema column count	167,00
- tMatchGroup	70
- tMap	36
- tLogRow	31

# Talend Project Audit

## D\_group\_family\_generate\_key

Indicator	Value
- tSortRow	13
- tGenKey	9
- tFixedFlowInput	8
Context variable count	0,00
Job notes count	0,00
Trigger count	1,00

# Talend Project Audit

## DataQuality\_Rules

Indicator	Value
Author	georges.duminy@decivision.com
Create	2023-07-06 22:28:30
Lasted modified	2023-11-08 12:08:38
Status	
Job rating	13,00
Component count	5,00
- tFileOutputExcel	2
- tDataStewardshipTaskInput	1
- tFileInputExcel	1
- tFilterRow	1
Schema column count	115,00
- tFilterRow	49
- tFileInputExcel	34
- tFileOutputExcel	32
- tDataStewardshipTaskInput	0
Context variable count	0,00

# Talend Project Audit

## DataQuality\_Rules

Indicator	Value
Job notes count	0,00
Trigger count	3,00

# Talend Project Audit

## DataQuality\_Standard

Indicator	Value
Author	georges.duminy@decivision.com
Create	2023-06-14 07:51:31
Lasted modified	2023-11-08 12:08:37
Status	
Job rating	7,20
Component count	3,00
- tDataQualityRules	1
- tFileInputExcel	1
- tFileOutputExcel	1
Schema column count	83,00
- tFileInputExcel	34
- tDataQualityRules	33
- tFileOutputExcel	16
Context variable count	0,00
Job notes count	0,00
Trigger count	0,00

# Talend Project Audit

## DataQuality\_Standard

Indicator	Value
-----------	-------

# Talend Project Audit

## DataSteward

Indicator	Value
Author	georges.duminy@decivision.com
Create	2023-03-01 19:14:53
Lasted modified	2023-11-21 16:32:05
Status	
Job rating	10,60
Component count	4,00
- tDataStewardshipTaskOutput	1
- tFileInputExcel	1
- tFilterRow	1
- tLogRow	1
Schema column count	30,00
- tFilterRow	10
- tDataStewardshipTaskOutput	9
- tFileInputExcel	8
- tLogRow	3
Context variable count	0,00

# Talend Project Audit

## DataSteward

Indicator	Value
Job notes count	0,00
Trigger count	1,00
Metadata count	2,00



# Talend Project Audit

## Data\_prep

Indicator	Value
Author	georges.duminy@decivision.com
Create	2023-03-01 20:45:37
Lasted modified	2023-11-21 16:32:04
Status	
Job rating	10,60
Component count	4,00
- tDataprepRun	1
- tFileInputExcel	1
- tFileOutputExcel	1
- tFilterRow	1
Schema column count	67,00
- tFileInputExcel	34
- tDataprepRun	16
- tFileOutputExcel	16
- tFilterRow	1
Context variable count	0,00

# Talend Project Audit

## Data\_prep

Indicator	Value
Job notes count	0,00
Trigger count	0,00
Metadata count	2,00

# Talend Project Audit

## DeDupeWithMatchGroup

Indicator	Value
Author	user@talend.com
Create	2011-02-04 17:50:55
Lasted modified	2023-03-01 18:49:06
Status	
Job rating	7,20
Component count	3,00
- tFileInputDelimited	1
- tFileOutputDelimited	1
- tMatchGroup	1
Schema column count	56,00
- tMatchGroup	26
- tFileInputDelimited	18
- tFileOutputDelimited	12
Context variable count	0,00
Job notes count	0,00
Trigger count	1,00

# Talend Project Audit

## DeDupeWithMatchGroup

Indicator	Value
Metadata count	2,00

# Talend Project Audit

## Demo\_IATA

Indicator	Value
Author	user@talend.com
Create	2011-09-19 15:22:54
Lasted modified	2023-03-01 18:49:04
Status	
Job rating	35,80
Component count	5,00
- tLogRow	2
- tFixedFlowInput	1
- tMap	1
- tSynonymSearch	1
Schema column count	31,00
- tSynonymSearch	15
- tMap	11
- tLogRow	4
- tFixedFlowInput	1
Context variable count	0,00

# Talend Project Audit

## Demo\_IATA

Indicator	Value
Job notes count	1,00
Trigger count	0,00

# Talend Project Audit

## Demo\_OFAC\_SDN

Indicator	Value
Author	user@talend.com
Create	2011-09-19 14:55:56
Lasted modified	2023-03-01 18:49:04
Status	
Job rating	38,20
Component count	6,00
- tLogRow	2
- tFilterColumns	1
- tFixedFlowInput	1
- tMap	1
- tSynonymSearch	1
Schema column count	31,00
- tSynonymSearch	15
- tMap	11
- tLogRow	3
- tFilterColumns	1

# Talend Project Audit

## Demo\_OFAC\_SDN

Indicator	Value
- tFixedFlowInput	1
Context variable count	0,00
Job notes count	3,00
Trigger count	0,00



# Talend Project Audit

## Demo\_standardize\_city\_names

Indicator	Value
Author	user@talend.com
Create	2011-09-19 15:22:54
Lasted modified	2023-03-01 20:37:50
Status	
Job rating	80,40
Component count	7,00
- tLogRow	3
- tMap	2
- tFixedFlowInput	1
- tSynonymSearch	1
Schema column count	98,00
- tMap	37
- tLogRow	30
- tSynonymSearch	27
- tFixedFlowInput	4
Context variable count	0,00

# Talend Project Audit

## Demo\_standardize\_city\_names

Indicator	Value
Job notes count	1,00
Trigger count	1,00

# Talend Project Audit

## DeplacerFichier

Indicator	Value
Author	georges.duminy@decivision.com
Create	2023-08-17 10:46:34
Lasted modified	2023-08-22 15:47:14
Status	
Job rating	8,72
Component count	2,00
- tFileCopy	1
- tFileList	1
Schema column count	0,00
- tFileCopy	0
- tFileList	0
Context variable count	2,00
Job notes count	0,00
Trigger count	1,00

# Talend Project Audit

## GetWeather

Indicator	Value
Author	admin@company.com
Create	2017-04-26 10:16:54
Lasted modified	2017-10-23 13:53:59
Status	
Provides weather forecast using a REST service	

some parameters.

### Parameters ###

- city name
- appid: How to get appid (api key) please se

Job rating	46,96
Component count	9,00
- tJobLog	2
- jCloudLog	1
- tExtractXMLField	1
- tFilterRow	1
- tFixedFlowInput	1
- tJobFailure	1
- tMap	1

# Talend Project Audit

## GetWeather

Indicator	Value
- tRESTClient	1
Schema column count	45,00
- tExtractXMLField	17
- tJobLog	8
- tFilterRow	6
- tRESTClient	6
- tMap	5
- tJobFailure	2
- tFixedFlowInput	1
- jCloudLog	0
Context variable count	6,00
Job notes count	0,00
Trigger count	4,00

# Talend Project Audit

## JD\_1\_ParseName

Indicator	Value
Author	user@talend.com
Create	2009-12-29 14:55:44
Lasted modified	2023-03-01 20:37:50
Status	DEV
Parse a persons name to determine Title, Firstname and Lastname	
Job rating	7,20
Component count	3,00
- tExtractDelimitedFields	1
- tMysqlInput	1
- tMysqlOutput	1
Schema column count	62,00
- tExtractDelimitedFields	26
- tMysqlOutput	26
- tMysqlInput	10
Context variable count	0,00
Job notes count	1,00
Trigger count	0,00

# Talend Project Audit

JD\_1\_ParseName

Indicator	Value
-----------	-------

# Talend Project Audit

## JD\_2\_StandardizeTitle

Indicator	Value
Author	user@talend.com
Create	2009-12-29 14:55:44
Lasted modified	2023-03-01 20:37:50
Status	DEV
Filters invalid titles and standardizes them using a replacement table	
Job rating	82,72
Component count	8,00
- tFileInputDelimited	2
- tMysqlOutput	2
- tFilterRow	1
- tFuzzyMatch	1
- tMap	1
- tMysqlInput	1
Schema column count	170,00
- tMysqlOutput	52
- tFilterRow	42
- tMap	40



# Talend Project Audit

## JD\_2\_StandardizeTitle

Indicator	Value
- tFuzzyMatch	14
- tMysqlInput	12
- tFileInputDelimited	10
Context variable count	2,00
Job notes count	0,00
Trigger count	1,00

# Talend Project Audit

## JD\_3\_ParseAccountDescription

Indicator	Value
Author	user@talend.com
Create	2009-12-29 14:55:44
Lasted modified	2023-03-01 18:49:05
Status	DEV
Parses the account description to extract the offer name, type and duration	
Job rating	176,72
Component count	18,00
- tExtractRegexFields	4
- tMap	4
- tMysqlInput	4
- tMysqlOutput	4
- tFileInputDelimited	2
Schema column count	276,00
- tExtractRegexFields	80
- tMysqlOutput	80
- tMap	76
- tMysqlInput	28

# Talend Project Audit

## JD\_3\_ParseAccountDescription

Indicator	Value
- tFileInputDelimited	12
Context variable count	2,00
Job notes count	0,00
Trigger count	3,00

# Talend Project Audit

## JD\_4\_ConsolidateAccounts

Indicator	Value
Author	user@talend.com
Create	2009-12-29 14:55:44
Lasted modified	2023-03-02 08:05:22
Status	DEV
Matches CIF Account and CRM Contract tables using tFuzzyJoin	
Job rating	15,92
Component count	5,00
- tFileOutputDelimited	2
- tMysqlInput	2
- tFuzzyJoin	1
Schema column count	53,00
- tFileOutputDelimited	18
- tFuzzyJoin	18
- tMysqlInput	17
Context variable count	2,00
Job notes count	0,00
Trigger count	1,00

# Talend Project Audit

## JD\_4\_ConsolidateAccounts

Indicator	Value
-----------	-------

# Talend Project Audit

## JD\_5\_Deduplicate\_CRM\_Customers

Indicator	Value
Author	user@talend.com
Create	2009-12-29 14:55:44
Lasted modified	2023-10-04 18:15:21
Status	DEV
Finds duplicates in the CRM Customer Data using the tFuzzyUnique component	
Job rating	13,52
Component count	4,00
- tFileOutputDelimited	2
- tFuzzyUniqRow	1
- tMysqlInput	1
Schema column count	64,00
- tFuzzyUniqRow	32
- tFileOutputDelimited	22
- tMysqlInput	10
Context variable count	2,00
Job notes count	0,00
Trigger count	2,00

# Talend Project Audit

## JD\_5\_Deduplicate\_CRM\_Customers

Indicator	Value
-----------	-------

# Talend Project Audit

## JD\_6\_ConsolidateCustomers

Indicator	Value
Author	user@talend.com
Create	2009-12-29 14:55:44
Lasted modified	2023-03-01 18:49:05
Status	DEV
Finds matches between CIF and CRM Customer tables using the tFuzzyJoin component	
Job rating	15,92
Component count	5,00
- tFileOutputDelimited	2
- tMysqlInput	2
- tFuzzyJoin	1
Schema column count	56,00
- tMysqlInput	20
- tFileOutputDelimited	18
- tFuzzyJoin	18
Context variable count	2,00
Job notes count	0,00
Trigger count	1,00



# Talend Project Audit

JD\_6\_ConsolidateCustomers

Indicator	Value
-----------	-------

# Talend Project Audit

## JS\_RunAll

Indicator	Value
Author	user@talend.com
Create	2010-02-12 15:52:16
Lasted modified	2023-03-01 18:49:05
Status	
Job rating	22,24
Component count	6,00
- tRunJob	6
Schema column count	0,00
- tRunJob	0
Context variable count	4,00
Job notes count	1,00
Trigger count	5,00

# Talend Project Audit

## LectureFichier

Indicator	Value
Author	georges.duminy@decivision.com
Create	2023-07-03 16:35:53
Lasted modified	2023-08-22 11:07:56
Status	
Job rating	481,28
Component count	87,00
- tFilterRow	14
- tHashInput	13
- tMap	12
- tHashOutput	10
- tJavaRow	9
- tLogRow	8
- tFlowToIterate	5
- tFileInputDelimited	4
- tFileInputFullRow	2
- tFileOutputDelimited	2

# Talend Project Audit

## LectureFichier

Indicator	Value
- tMemorizeRows	2
- tSortRow	2
- tFileList	1
- tFixedFlowInput	1
- tJava	1
- tNormalize	1
Schema column count	457,00
- tFilterRow	131
- tMap	107
- tHashInput	50
- tLogRow	44
- tFileInputDelimited	40
- tHashOutput	39
- tFileOutputDelimited	22
- tMemorizeRows	7
- tSortRow	7
- tJavaRow	6
- tFileInputFullRow	2

# Talend Project Audit

## LectureFichier

Indicator	Value
- tFixedFlowInput	1
- tNormalize	1
- tFileList	0
- tFlowToIterate	0
- tJava	0
Context variable count	3,00
Job notes count	1,00
Trigger count	43,00

# Talend Project Audit

## Load\_customer\_data

Indicator	Value
Author	user@talend.com
Create	2010-07-30 11:03:28
Lasted modified	2023-03-01 18:49:05
Status	
Job rating	4,80
Component count	2,00
- tFileInputExcel	1
- tMysqlOutput	1
Schema column count	36,00
- tFileInputExcel	18
- tMysqlOutput	18
Context variable count	0,00
Job notes count	0,00
Trigger count	0,00
Metadata count	4,00

# Talend Project Audit

## Load\_partsmaster\_data

Indicator	Value
Author	user@talend.com
Create	2010-10-25 11:28:12
Lasted modified	2023-03-01 18:49:05
Status	
Job rating	4,80
Component count	2,00
- tFileInputExcel	1
- tMysqlOutput	1
Schema column count	20,00
- tFileInputExcel	10
- tMysqlOutput	10
Context variable count	0,00
Job notes count	0,00
Trigger count	0,00
Metadata count	4,00

# Talend Project Audit

## RunAllFirstnameJobs

Indicator	Value
Author	user@talend.com
Create	2011-10-04 17:03:51
Lasted modified	2023-03-01 18:49:03
Status	
Job rating	7,20
Component count	3,00
- tRunJob	3
Schema column count	0,00
- tRunJob	0
Context variable count	0,00
Job notes count	1,00
Trigger count	2,00



# Talend Project Audit

## SayHello

Indicator	Value
Author	admin@company.com
Create	2017-04-26 09:30:56
Lasted modified	2017-10-23 13:54:11
Status	
Creates a welcome text.	
- name: type your name	

Job rating	22,56
Component count	4,00
- jCloudLog	1
- tFixedFlowInput	1
- tJobLog	1
- tMap	1
Schema column count	4,00
- tMap	2
- tFixedFlowInput	1
- tJobLog	1
- jCloudLog	0

# Talend Project Audit

## SayHello

Indicator	Value
Context variable count	1,00
Job notes count	0,00
Trigger count	0,00

# Talend Project Audit

## Video\_Viewers\_Watch\_Results\_Log\_Filter

Indicator	Value
Author	admin@company.com
Create	2014-09-29 13:55:55
Lasted modified	2023-11-21 16:32:05
Status	
This Job connects to Dropbox, downloads, reads and filters a log .csv file and then writes the results back to Dronbox.	

## Connection Parameter

- \*connection\_dropbox\_access\_token\*: access token of the Dropbox ac

Job rating	66,64
Component count	14,00
- tDataDecrypt	2
- tFileOutputDelimited	2
- tJavaFlex	2
- tDatasetInput	1
- tDropboxConnection	1
- tDropboxGet	1
- tDropboxPut	1

# Talend Project Audit

## Video\_Viewers\_Watch\_Results\_Log\_Filter

Indicator	Value
- tFileInputDelimited	1
- tFilterRow	1
- tFlowToIterate	1
- tMap	1
Schema column count	44,00
- tFilterRow	13
- tFileInputDelimited	10
- tFileOutputDelimited	9
- tMap	8
- tDropboxGet	2
- tDropboxPut	1
- tJavaFlex	1
- tDataDecrypt	0
- tDatasetInput	0
- tDropboxConnection	0
- tFlowToIterate	0
Context variable count	4,00
Job notes count	1,00

# Talend Project Audit

## Video\_Viewers\_Watch\_Results\_Log\_Filter

Indicator	Value
Trigger count	6,00

# Talend Project Audit

## address\_standardization

Indicator	Value
Author	user@talend.com
Create	2011-10-10 15:13:55
Lasted modified	2023-03-01 18:49:03
Status	
Job rating	61,00
Component count	12,00
- tFileOutputDelimited	2
- tFilterColumns	2
- tFilterRow	2
- tFixedFlowInput	1
- tGoogleAddressRow	1
- tLogRow	1
- tMap	1
- tMatchGroup	1
- tSynonymSearch	1
Schema column count	487,00

# Talend Project Audit

## address\_standardization

Indicator	Value
- tFilterRow	224
- tFileOutputDelimited	76
- tMatchGroup	76
- tGoogleAddressRow	33
- tSynonymSearch	29
- tMap	18
- tFilterColumns	15
- tFixedFlowInput	10
- tLogRow	6
Context variable count	0,00
Job notes count	1,00
Trigger count	5,00

# Talend Project Audit

## c0\_create\_duplicates

Indicator	Value
Author	user@talend.com
Create	2011-01-28 17:11:08
Lasted modified	2023-03-01 18:49:02
Status	
Some records have an account number. The other records don't but have an additional "mi" column for middle initial	
Job rating	69,56
Component count	6,00
- tFixedFlowInput	2
- tMap	2
- tFileOutputExcel	1
- tUnite	1
Schema column count	60,00
- tMap	30
- tFixedFlowInput	14
- tFileOutputExcel	8
- tUnite	8
Context variable count	1,00



# Talend Project Audit

## c0\_create\_duplicates

Indicator	Value
Job notes count	1,00
Trigger count	0,00

# Talend Project Audit

## c1\_merge\_exact\_duplicates

Indicator	Value
Author	user@talend.com
Create	2011-01-28 17:11:08
Lasted modified	2023-03-01 18:49:02
Status	
reads a file, groups identical records and merge them to create more complete records (requires at least TDQ 4.1.2 with patched tSurviveFields)	
Job rating	17,44
Component count	4,00
- tFileInputExcel	1
- tFileOutputExcel	1
- tMatchGroup	1
- tSurviveFields	1
Schema column count	60,00
- tMatchGroup	26
- tFileInputExcel	18
- tFileOutputExcel	8
- tSurviveFields	8
Context variable count	4,00

# Talend Project Audit

## c1\_merge\_exact\_duplicates

Indicator	Value
Job notes count	1,00
Trigger count	1,00

# Talend Project Audit

## cif\_customer\_parsing

Indicator	Value
Author	user@talend.com
Create	2010-12-15 18:09:36
Lasted modified	2023-03-02 08:05:24
Status	
Job rating	14,40
Component count	6,00
- tExtractDelimitedFields	1
- tMysqlCommit	1
- tMysqlConnection	1
- tMysqlInput	1
- tMysqlOutput	1
- tMysqlRollback	1
Schema column count	62,00
- tExtractDelimitedFields	26
- tMysqlOutput	26
- tMysqlInput	10

# Talend Project Audit

## cif\_customer\_parsing

Indicator	Value
- tMysqlCommit	0
- tMysqlConnection	0
- tMysqlRollback	0
Context variable count	0,00
Job notes count	0,00
Trigger count	3,00
Metadata count	6,00

# Talend Project Audit

## correct\_claim\_dates

Indicator	Value
Author	user@talend.com
Create	2011-03-11 15:44:41
Lasted modified	2023-03-01 18:49:05
Status	
Job rating	4,80
Component count	2,00
- tFileInputDelimited	1
- tMysqlOutput	1
Schema column count	16,00
- tFileInputDelimited	8
- tMysqlOutput	8
Context variable count	0,00
Job notes count	0,00
Trigger count	0,00
Metadata count	4,00

# Talend Project Audit

demo\_

Indicator	Value
Author	georges.duminy@decivision.com
Create	2023-10-04 15:41:25
Lasted modified	2023-10-06 15:56:53
Status	
Job rating	88,60
Component count	4,00
- tFileInputExcel	2
- tFileOutputExcel	1
- tMap	1
Schema column count	156,00
- tFileInputExcel	80
- tMap	57
- tFileOutputExcel	19
Context variable count	0,00
Job notes count	0,00
Misplaced input component	0,00

# Talend Project Audit

demo\_

Indicator	Value
Misplaced lookup component	1,00
Misplaced output component	0,00
Trigger count	0,00
Metadata count	4,00



# Talend Project Audit

## extract\_invalid\_values

Indicator	Value
Author	user@talend.com
Create	2010-12-15 16:49:56
Lasted modified	2023-03-01 18:49:06
Status	
Exercise 7	
Job rating	7,20
Component count	3,00
- tLogRow	1
- tMySQLInvalidRows	1
- tMysqlConnection	1
Schema column count	20,00
- tLogRow	10
- tMySQLInvalidRows	10
- tMysqlConnection	0
Context variable count	0,00
Job notes count	0,00
Trigger count	1,00

# Talend Project Audit

## extract\_invalid\_values

Indicator	Value
Metadata count	2,00

# Talend Project Audit

## jCloudLog

Indicator	Value
Author	admin@company.com
Create	2015-03-31 08:48:43
Lasted modified	2017-10-09 13:52:06
Status	
Catch error and forward it to TIC. It is mandatorv in each single Action .Job	
Job rating	9,60
Component count	4,00
- tJobLog	2
- tJobFailure	1
- tLogCatcher	1
Context variable count	0,00
Job notes count	0,00
Trigger count	0,00

# Talend Project Audit

## main

Indicator	Value
Author	georges.duminy@decivision.com
Create	2023-08-16 14:17:14
Lasted modified	2023-08-22 15:47:14
Status	
Job rating	2,40
Component count	1,00
- tInformixConnection	1
Schema column count	0,00
- tInformixConnection	0
Context variable count	0,00
Job notes count	0,00
Trigger count	0,00
Metadata count	2,00

# Talend Project Audit

## phone\_number

Indicator	Value
Author	user@talend.com
Create	2011-03-09 19:33:24
Lasted modified	2023-03-02 12:05:37
Status	
This simple job shows how to use the tStandardizePhoneNumber component	
Job rating	7,20
Component count	3,00
- tFixedFlowInput	1
- tLogRow	1
- tStandardizePhoneNumber	1
Schema column count	18,00
- tLogRow	8
- tStandardizePhoneNumber	8
- tFixedFlowInput	2
Context variable count	0,00
Job notes count	1,00
Trigger count	0,00

# Talend Project Audit

phone\_number

Indicator	Value
-----------	-------

# Talend Project Audit

## products\_parsing

Indicator	Value
Author	user@talend.com
Create	2011-03-23 17:44:38
Lasted modified	2023-10-04 18:15:21
Status	
parses product data and split products with a valid size description from products without a valid size description	
Job rating	17,80
Component count	7,00
- tLogRow	3
- tExtractXMLField	1
- tFilterRow	1
- tFixedFlowInput	1
- tStandardizeRow	1
Schema column count	42,00
- tFilterRow	13
- tLogRow	12
- tExtractXMLField	11
- tStandardizeRow	5

# Talend Project Audit

## products\_parsing

Indicator	Value
- tFixedFlowInput	1
Context variable count	0,00
Job notes count	2,00
Trigger count	3,00



# Talend Project Audit

## tGoogleAddressRow

Indicator	Value
Author	user@talend.com
Create	2011-07-13 10:45:54
Lasted modified	2023-10-04 18:15:21
Status	
Job rating	7,20
Component count	3,00
- tGoogleAddressRow	1
- tLogRow	1
- tRowGenerator	1
Schema column count	54,00
- tGoogleAddressRow	26
- tLogRow	26
- tRowGenerator	2
Context variable count	0,00
Job notes count	1,00
Trigger count	0,00

# Talend Project Audit

tGoogleAddressRow

Indicator	Value
-----------	-------

# Talend Project Audit

## tGoogleGeocoder

Indicator	Value
Author	user@talend.com
Create	2011-08-04 11:27:55
Lasted modified	2023-03-01 18:48:48
Status	
Job rating	7,20
Component count	3,00
- tGoogleGeocoder	1
- tLogRow	1
- tRowGenerator	1
Schema column count	7,00
- tGoogleGeocoder	3
- tLogRow	3
- tRowGenerator	1
Context variable count	0,00
Job notes count	1,00
Trigger count	0,00

# Talend Project Audit

tGoogleGeocoder

Indicator	Value
-----------	-------

# Talend Project Audit

## tGoogleMapLookup

Indicator	Value
Author	user@talend.com
Create	2011-08-04 11:27:55
Lasted modified	2023-03-01 18:48:48
Status	
Job rating	7,20
Component count	3,00
- tGoogleMapLookup	1
- tLogRow	1
- tRowGenerator	1
Schema column count	50,00
- tGoogleMapLookup	24
- tLogRow	24
- tRowGenerator	2
Context variable count	0,00
Job notes count	1,00
Trigger count	0,00

# Talend Project Audit

tGoogleMapLookup

Indicator	Value
-----------	-------

# Talend Project Audit

test

Indicator	Value
Author	georges.duminy@decivision.com
Create	2023-11-06 10:57:17
Lasted modified	2023-11-06 11:17:07
Status	
Job rating	0,00
Component count	0,00
Schema column count	0,00
Context variable count	0,00
Job notes count	0,00
Trigger count	0,00